

Levenhuk DTX DX50

Digital magnifier



EN	User Manual
BG	Ръководство за потребителя
CZ	Návod k použití
DE	Bedienungsanleitung
ES	Guía del usuario
HU	Használati útmutató
IT	Guida all'utilizzo
PL	Instrukcja obsługi
PT	Manual do usuário
RU	Инструкция по эксплуатации
TR	Kullanım kılavuzu

600x
ZOOM



levenhuk
Zoom&Joy

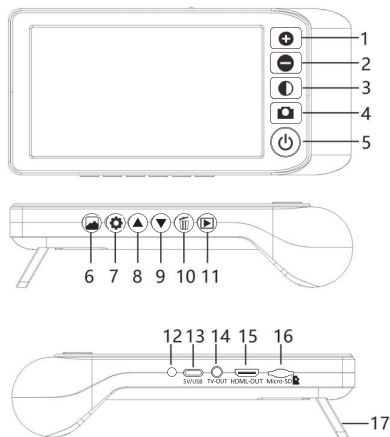
Levenhuk DTX DX50

Digital Magnifier

EN

Magnifier parts

- 1 Button + (Zoom In)
- 2 Button - (Zoom Out)
- 3 Color mode
- 4 Freeze/Capture/Confirm button
- 5 Power button
- 6 Camera switch button
- 7 Settings
- 8 Button Up
- 9 Button Down
- 10 Delete
- 11 Playback
- 12 Charging indicator
- 13 5V/USB port
- 14 TV-out
- 15 HDMI interface
- 16 MicroSD card slot
- 17 Foldable stand



The kit includes: portable digital magnifier, MicroSD card 8GB, AC adapter, TV-out cable, HDMI cable, Type-C USB cable, carrying bag, cleaning wipe, user manual, and warranty.

Never, under any circumstances, look directly at the Sun, another bright source of light or at a laser through this device, as this may cause **PERMANENT RETINAL DAMAGE** and may lead to **BLINDNESS**.

Charging the device

Connect the power cable to the device and the AC adapter via a USB plug and connect it to the AC power supply to charge the device. When the battery gets charged, the LED indicator turns off. Unplug the magnifier.

! Always turn the magnifier off during charging. The battery will not charge if the magnifier is left on.

Getting started

Press the Power button (5) and hold it for 3 seconds to turn the device on/off.

Installing/removing the memory card

The device supports memory cards class 10 up to 64GB.

- Insert the microSD card into the slot. Make sure the direction is right.
- Do not force the card in.
- Remove the microSD card before starting, as it will improve its compatibility with the device.
- To remove the card from the slot, press the edge of the memory card in gently, and the card will pop out. Then, remove the card.

! If the memory card is not installed, a No Card icon will be displayed.

Color Mode selection

Press the Color Mode button to cycle through the magnifier's 7 different color modes as follows: full color, black on white, white on black, blue on white, blue on yellow, yellow on black, yellow on blue.

Magnification adjustment

To change the level of magnification, press the button + (1) or button - (2): 2x, 4x, 8x, 16x, 32x.

Freeze image

Press the Freeze/Capture/Confirm button (4) to switch between freezing and unfreezing the current image.

Camera switch

Press the Camera switch button (6) to switch between the Near camera and the Far camera.

In the Far camera mode, the digital magnifier is used as a digital camera, not as a reading aid. The image is full color only.

Reading with the magnifier

1. Press the Camera switch button (6) to switch to the Near camera.
2. Pull out the foot of the magnifier until it sits at its maximum range.
3. Place the magnifier flat against the text you want to read.
4. Slide the unit gradually to the right to read to the end of the line. Slide the unit down and back to the left to read the next line of text.
5. To change the level of magnification, press the button + (1) or button – (2).
6. To change the colors used on the screen, press the Color Mode button (3) until you find the mode best suited for your vision needs.

Taking a photo

1. Press the Camera switch button (6) to switch to the Far camera.
2. Press and hold the Freeze/Capture/Confirm button (4) to take a picture. The captured photos will be automatically stored in the microSD card.

The pictures are saved in full color only.

Playback

Press the Playback button (11) to view captured photos. Press the Up button or the Down button to move forward or back. Press the Delete button (10) to delete a captured image. Press the Freeze/Capture/Confirm button (4) to confirm. Press the Playback button (11) again to return the magnifier to the reading mode.

Output to monitor with TV-in

1. Connect the magnifier to the TV using the TV video cable or HDMI-cable; turn the power on and then you can display the pictures on the TV screen.
2. Press the Settings button (7), select TV Mode (TV Mode) in the menu, select the NTSC or PAL signal option.

Settings

Press the Settings button (7) to select and change the following options: Time and Date, Date Stamp, Auto-Off, Beep Sound, TV Mode, Language Settings, Memory Formatting, and Default Settings.

Copying files

You can transfer files from the device to your smartphone, tablet, or PC directly.

- Insert the memory card into a card reader; or
- Connect the device to your computer with a Type-C USB cable.

Specifications

Magnification	2–32x (2x, 4x, 8x, 16x, 32x)
Illumination	6LEDs
Display	5" color IPS LCD screen, 1280x800px
Near camera (reading aid)	1 MP (720px)
Far camera (digital camera)	5 MP
Color mode	7 color modes
Image format	JPEG
Focus	18–45mm, 300–3000mm
Ability to connect additional equipment	to a computer via USB cable, to a TV via analog cable or via HDMI cable
TV-out	analog TV and HDMI
TV signal	NTSC or PAL
USB port	5V/USB-C
Storage	8GB microSD card (included), up to 64GB
Auto-off	+
Body material	ABS
Operating temperature	0°C...45°C (32°F...113°F)
Power supply	built-in rechargeable Li-ion battery (4h of continuous operation, 5h of charging), AC adapter; Type-C USB cable

The manufacturer reserves the right to make changes to the product range and specifications without prior notice.

Care and maintenance

Do not expose the device to direct sunlight — that could cause a fire! Do not scratch or touch the optical surfaces with your fingers. Remove the batteries before cleaning the device! Use only dry, lint-free cloths to wipe the outer parts of the device. Do not use cleaning fluid to avoid the electronics damage. To avoid scratching the lenses, only use a soft cloth and do not press too hard. Keep the device away from dust and water. Keep the device in a bag or a box. Remove the batteries from the device if it has not been used for a long time.

Battery safety instructions

Always purchase the correct size and grade of battery most suitable for the intended use. Always replace the whole set of batteries at one time; taking care not to mix old and new ones, or batteries of different types. Clean the battery contacts and also those of the device prior to battery installation. Make sure the batteries are installed correctly with regard to polarity (+ and –). Remove batteries from equipment that is not to be used for an extended period of time. Remove used batteries promptly. Never short-circuit batteries as this may lead to high temperatures, leakage, or explosion. Never heat batteries in order to revive them. Do not disassemble batteries. Remember to switch off devices after use. Keep batteries out of the reach of children, to avoid risk of ingestion, suffocation, or poisoning. Utilize used batteries as prescribed by your country's laws.

Levenhuk International Lifetime Warranty

All Levenhuk telescopes, microscopes, binoculars, and other optical products, except for their accessories, carry a lifetime warranty against defects in materials and workmanship. A lifetime warranty is a guarantee on the lifetime of the product on the market. All Levenhuk accessories are warranted to be free of defects in materials and workmanship for six months from the purchase date. The warranty entitles you to the free repair or replacement of the Levenhuk product in any country where a Levenhuk office is located if all the warranty conditions are met.

For further details, please visit: levenhuk.com/warranty

If warranty problems arise, or if you need assistance in using your product, contact the local Levenhuk branch.